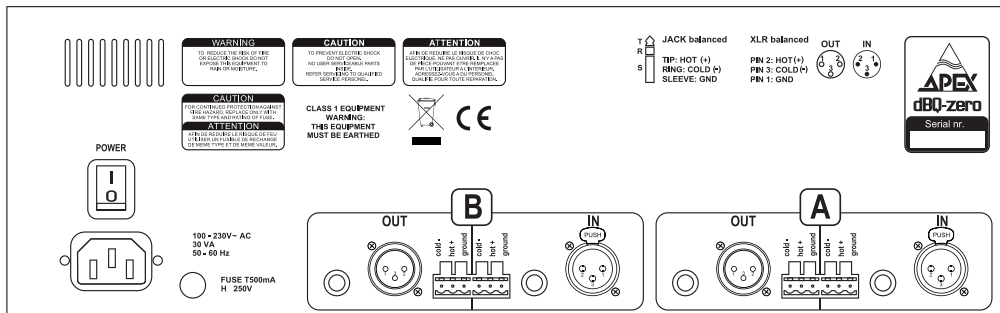
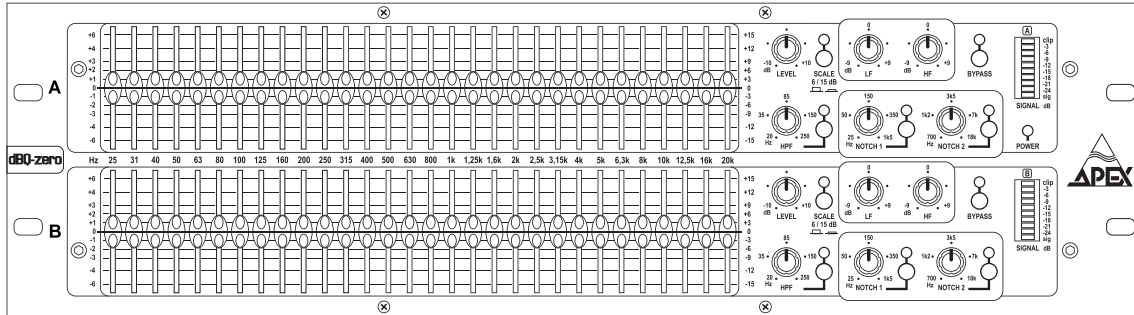


dBQ-Zero
Graphic Equaliser

D a t a s h e e t



Apex has been active in manufacturing Pro Audio Signal Processors since '91. Our goal has always been to develop original products, e.g. the innovative Intelli-Q and the PE series Paragraphic Equalizer.

With the new dBQzero, Apex offers a high quality graphic equalizer with excellent specifications and comprehensive features at a very affordable price.

Potential users:
PA-Companies, Rental Companies, Install Companies, DJ's, musicians, etc.

Electrical specifications

Balanced line level input

Connectors 1/4 TRS jack / 3-pin XLR / screw terminal
Impedance >10k ohms, balanced
Max. input level +21 dBu, balanced, 1% THD+N
CMRR +21dBu, balanced, 1% THD

Balanced line level output

Connectors 1/4 TRS jack / 3-pin XLR / screw terminal
Impedance < 50 ohm, balanced
Max. output level +21dBu into 600 ohms, balanced, 1% THD+N

Audio performance (unity gain, all settings flat)

Frequency response 20 Hz - 20 kHz, ±0.5 dB
THD+N less than 0,005%, +4 dBu, 20Hz- 20 kHz, 22 kHz BW
Signal to Noise ratio >94 dB ref 4 dBu, 22 kHz BW, un-weighted
Crosstalk -75 dB, 20 Hz - 20 kHz, +4 dBu, channel-to-channel

Functions

Gain control: ±10 dB
Graphic EQ: 30 x 45 mm faders, switchable boost/cut ±6 dB or ±15 dB, ISO frequencies, constant-Q
High pass filter: 12 dB/octave variable 20 Hz – 250 Hz
HF shelving filter: ±9 dB at 14 kHz
LF shelving filter: ±9 dB at 100 Hz
Two notch filters: Fixed Q factor of 4, fixed depth of -20 dB, variable frequency control: first 25 Hz-1500 Hz, second 700 Hz-18 kHz

AC power requirements

Voltage Auto-detect 100 - 240 V - 50/60 Hz
Power consumption 30 VA



Electrical specifications

Environment

Operating
Temperature 5° to 40° C
Relative humidity up to 60 %

Storage
Temperature -20° to 60° C

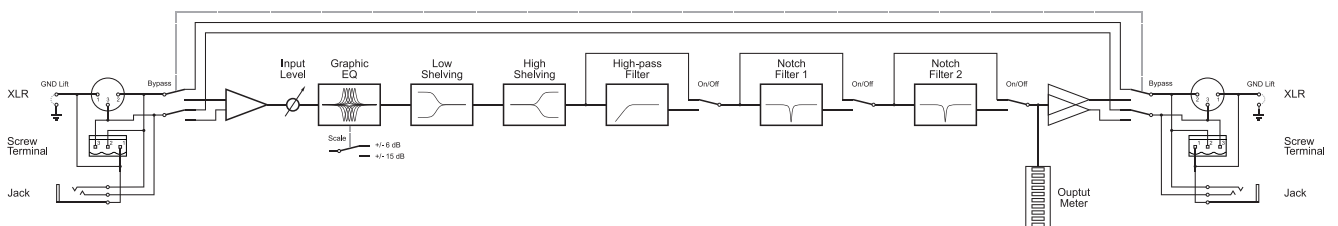
Mechanical specifications

Dimensions

Unit
Width 482 mm (19-inch)
Height 133 mm (3U)
Depth 183 mm

Package
Width 560 mm
Height 215 mm
Depth 310 mm

Channel A



Channel B

