

RS15 SUBBASS

The new RS (RaySub) 15 is the first offering NEXO's innovative SubBass product line. Both a technological and applicative breakthrough, the patent pending RS15 offers directive subwoofer coverage from a standard bass reflex subwoofer architecture, allowing easy cabinet deployment in both omni-directional and cardioid modes.

ANALOGUE PROCESSING

Analogue LF processing, provided by the S12 TDcontroller, yields a traditional, omni-directional (cone-forward) LF and VLF pattern control and performance. (see below)

DSP PROCESSING AND PATTERN CONTROL

Digital signal processing, via NX242 TDcontrollers, allows the RS15 to display precise cardioid pattern control through DSP-processed correlation of acoustic distances between transducer and vent sources.

These sources are linearly positioned in the output direction of the cardioid pattern.

RS15 sub does not face the same direction while in omni and cardio mode. In cardio mode, RS15 sidewalls (where the rigging system is attached) behave as the cabinets' front and rear face. As such, RS15's cardioid LF and VLF energy propagates from only one end of the enclosure, rather than from the front face. (see below) This behavior is maintained regardless of whether speaker cones are positioned on the side or top.

RS15 ACCESSORY RANGE

- Dolly
- Bumper
- Rigging Plates

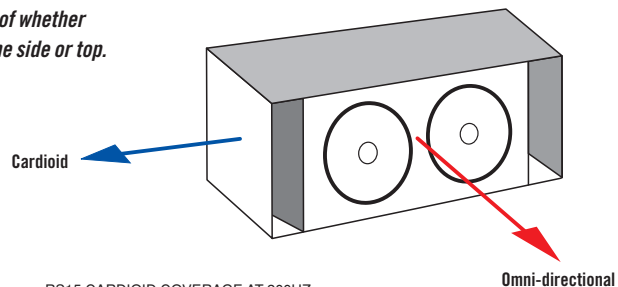
RS15 ADVANTAGES

Low Profile, High Output, Modular, Scalable Bass

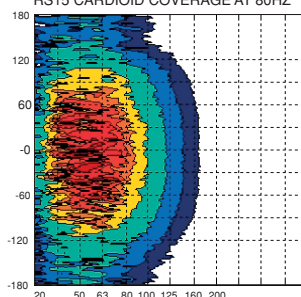
Arrays to provide spectacular cardioid results

Cardioid pattern reduces rear levels by 15-18dB minimizing rear/side wall reflections

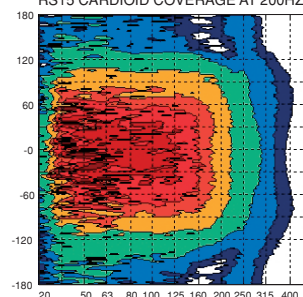
Applies across entire NEXO product line and deploys in nearly any sub-hire rental



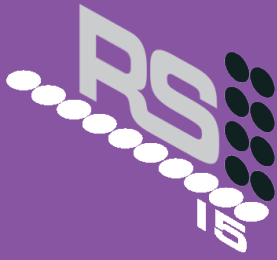
RS15 CARDIOID COVERAGE AT 80HZ



RS15 CARDIOID COVERAGE AT 200HZ



NEXO
INNOVATE
www.nexo-sa.com



NEXO is one of the world's leading sound reinforcement loudspeaker manufacturers. Founded in 1979, the company is dedicated to crafting practical solutions with solid engineering. Each new design begins with a proprietary sophisticated computer simulation process that allows every parameter to be extensively modeled and simulated, leading to breakthrough cost and performance gains. NEXO's comprehensive product line includes loudspeakers, analogue and digital control electronics and amplification; all designed to deliver consistent sound quality and long term reliability for a broad range of applications.

NEXO S.A.
 Parc d'Activité du Pré de la Dame Jeanne
 B.P. 5
 60128 PLAILLY
 Tel: +33 (0) 3 44 99 00 70
 Fax: +33 (0) 3 44 99 00 30
 e-mail: info@nexo.fr

NEXO LatAM
 C.C. No 33. Suc 49
 Caballito (1449)
 Buenos Aires
 Argentina
 Tel: +54 114 432 1911
 Fax: +54 114 431 1007
 e-mail: info@nexo.fr

NEXO Asia
 GPO Box 806
 Hong Kong
 SAR China
 Tel: +852 9096 3472
 Fax: +852 2104 3214
 e-mail: info@nexo.fr

NEXO

INNOVATE

www.nexo-sa.com

RS15 PRODUCT FEATURES

| | |
|------------------------|---|
| Components | 2 x 15" (38cm) long excursion neodymium 8Ω drivers |
| Height x Width x Depth | 454 x 564 x 1074mm (17.9" x 22.2" x 42.3") |
| Shape | Rectangular |
| Weight | Net 55kg (121lbs) |
| Connectors | 2 x NL4MP SPEAKON 4 pole (In & Through) |
| Construction | Baltic birch ply finish with structured black coating. Dark grey carpet finish also available. |

SYSTEM SPECIFICATIONS RS15 with NX241 TDCController

| | |
|------------------------------|---|
| Frequency Response @-3dB [a] | 35Hz – 200Hz |
| Usable Range @-6dB [a] | 33Hz – 250Hz |
| Sensitivity 1W @ 1m [b] | 105dB SPL Nominal |
| Peak SPL @ 1m [b] | 137 – 140dB Peak |
| Dispersion [c] | Cardioid or Omni pattern over the entire useable bandwidth depending on the NX242 Digital TDCController set up.(two channels of the NX242 are used for the processof the cardioid setup). |
| Directivity Index [c] | 1 < Q < 5.3 0dB < DI < 7.2dB |
| Crossover Frequency | NX242 Digital Controller / NXAmp Powered Controller preset dependent, from 80Hz to 200Hz. |
| Nominal Impedance | 2 x 8Ω |
| Recommended Amplifiers | 2 amplifier channels are required for cardioid operation, each rated at 700 to 1200 Watts into 8Ω per channel |

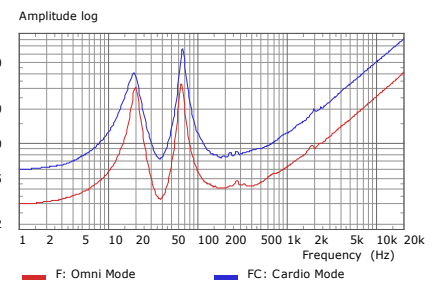
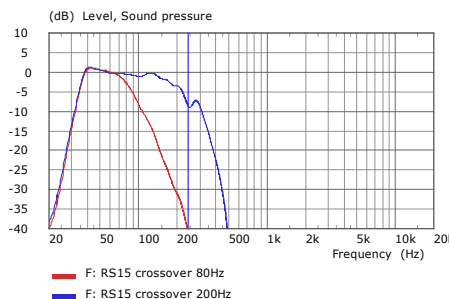
SYSTEM OPERATION

| | |
|-----------------------|--|
| Electronic Controller | NX242 Digital TDCController (cardioid & Omni) - NXAMP Powered Controller presets are precisely matched to the RS15 and include sophisticated protection systems. GeoS12 Analogue TDCController presets (Omni Only) are precisely matched to the RS15 and include sophisticated protection systems. Using RS15 Sub-Bass without a properly connected TDCController will result in poor sound quality and can damage components. |
| Speaker Cables | The front loudspeaker of the RS15 is wired 2+ & 2- while the rear loudspeaker is wired 1- & 1+. The RS15 must use separate cables to the main system. |
| Accessories | Rigging Plates - Bumper - Wheelboard |
| Rigging System [d] | Please refer to the user manual before any operation. |

SHIPPING & ORDERING

| | |
|-----------|--|
| Packaging | RS15s are packaged individually. Order as RS15 -C (finished in grey carpeting) or RS15 -P (finished in black structured coating) |
|-----------|--|

As part of a policy of continual improvement, NEXO reserves the right to change specifications without notice.
 [a] Response curves and data: anechoic far field above 400 Hz, half-space anechoic below 400 Hz. Usable range data: frequency response capability with TD crossover slopes removed. [b] Sensitivity & peak SPL: will depend on spectral distribution. Measured with band limited pink noise. Refers to the specified +/- 3 dB range. Data are for speaker + processor + recommended amplifier combinations. [c] Directivity curves and data: 1/3 octave smoothed frequency response, normalized to on-axis response. Data obtained by computer processing of off-axis response curves. [d] Please refer to the user manual.



LIMITED WARRANTY

NEXO loudspeakers and electronics are covered against defects in workmanship or materials for a period of two (2) years from the original date of purchase. At the option of NEXO the defective item will be repaired/replaced with no charge for materials/labour. The item is to be adequately packaged and dispatched, pre-paid, to a NEXO authorised distributor/service centre. Unauthorised repair shall void the warranty. The NEXO warranty does not cover cosmetics or finish and does not apply to any items which in NEXO's opinion have failed due to used abuse, accidents, modifications or any type of misuse. All images and text herein are the property of NEXO SA, and deemed accurate, although specifications are subject to change without notice.